

How to Install MiCAM05 USB Driver for Wave Function in Windows 7/10

This manual covers a simple method for installing MiCAM05 USB driver for wave function (real time light intensity monitor function, "BV_MC05Wave.exe") in [Windows 7 64bit](#) and [Windows 10 64bit](#). The displayed dialog boxes, indications or operations may differ slightly from the following instructions, depending on the OS installed on your computer.

Before starting the installation, you need to confirm the following.

- The user needs to have Administrator privilege to install.
- Quit all other applications if running.

(0) Download the USB driver software from SciMedia website.

URL: <http://www.scimedia.com/fis/support/download/micam05/>

File: [\[Top\]](#)-->[\[Support\]](#)-->[\[Downloads\]](#)-->[\[MiCAM05\]](#)-[\[Interface Drive\]](#)

-[\[BV_MC05Wave Driver for Windows 7/10 64bit\]](#)

The USB driver software is on the following page. Click [\[Interface Drive\]](#)-[\[BV_MC05Wave Driver for Windows 7/10 64bit\]](#) to download "Driver_BV_MC05Wave.zip" file.

Neuronal Imaging Cardiac Imaging General Purpose High Speed Imaging Other Equipment **Support**

[Top](#) > [Support](#) > [Downloads](#) > MiCAM05

Downloads

MiCAM05

Acquisition Software

[Data Acquisition Software for Windows 7/10 64bit \(Ver 3.3\) \[2.4MB\] **NEW**](#)

Interface Driver

[BV_MC05Exp Driver for Windows 7 64bit \[ZIP: 1.7MB\]](#)
[BV_MC05Exp Driver for Windows 10 64bit \[ZIP: 1.7MB\]](#)
[BV_MC05Wave Driver for Windows 7/10 64bit \[ZIP: 870KB\]](#)

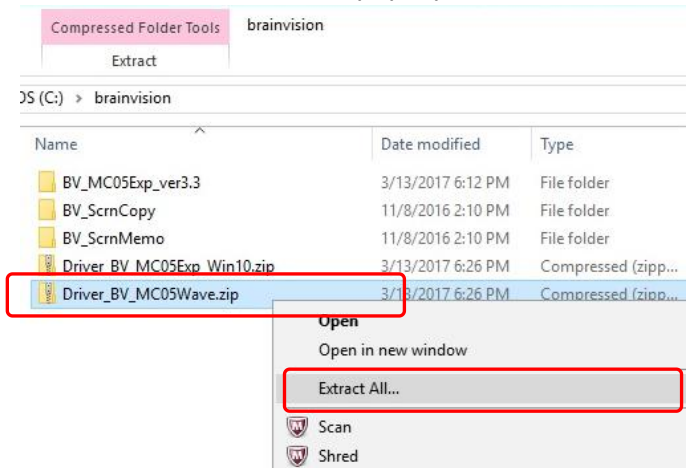
Support

- [MiCAM User List](#)
- [Downloads](#)**
- [MiCAM05](#)
- [MiCAM ULTIMA](#)
- [MiCAM02](#)
- [MiCAM01](#)
- [ESTM-8](#)
- [Product Brochure](#)
- [FAQ](#)

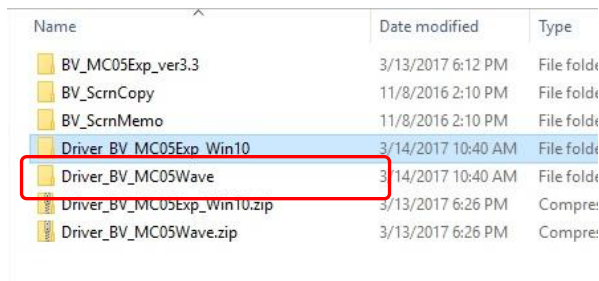
BrainVision

(0-1) After downloading the file, right-click the "Driver_BV_MC05Wave.zip" file and then, select

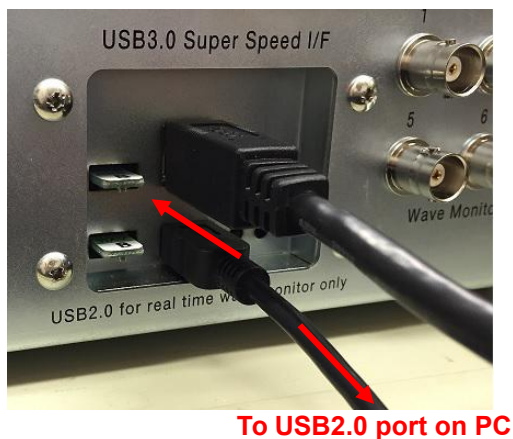
“Extract All...” from the pop-up menu.



“Driver_BV_MC05Wave” folder is created. This folder should be selected during the process of the driver installation.



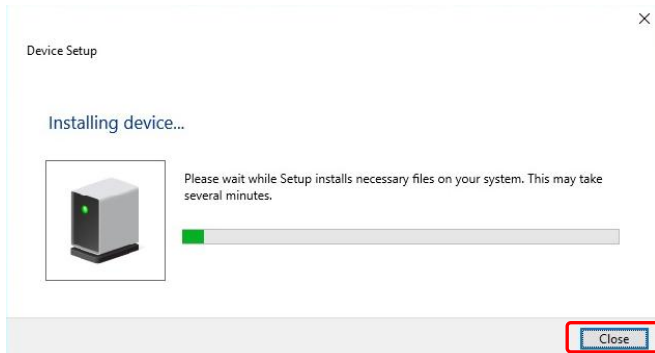
- (1) Connect all cables by referring to the MiCAM05 diagram. Connect USB2.0 cable to USB2.0 mini-B connector.




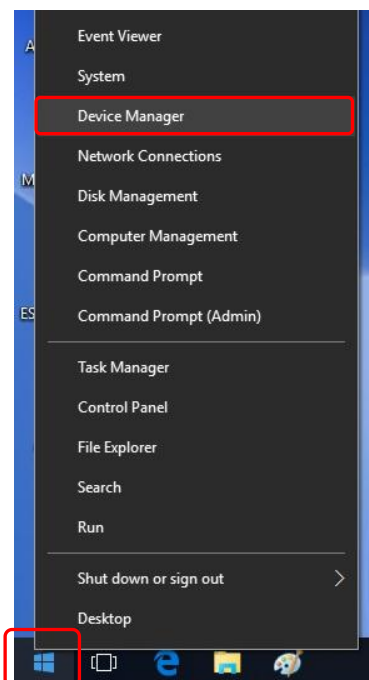
(2) Turn on the power switch on the right of the front panel of MiCAM05 processor.



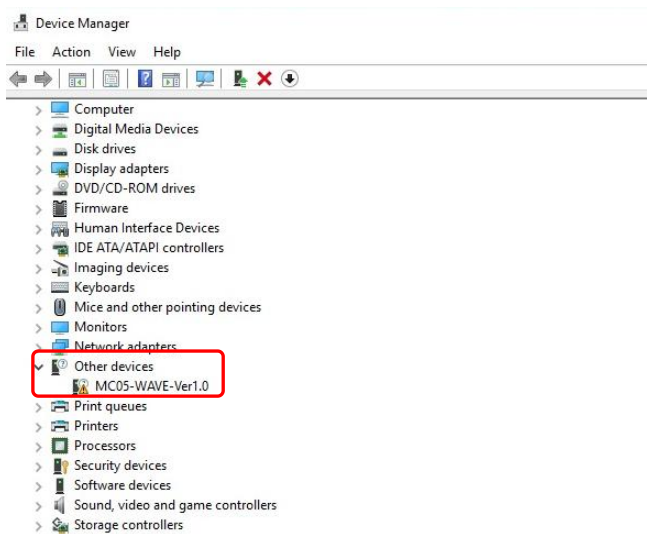
(3) OS starts to look for driver software, but click [Close] button to skip this step.



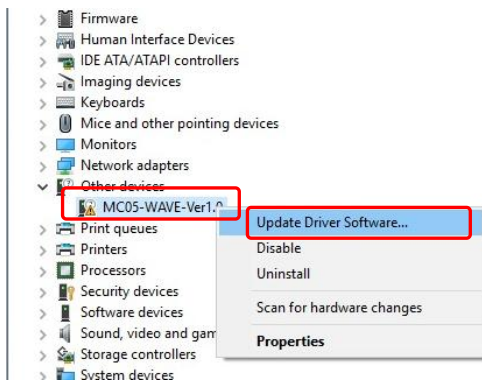
(4) Right-click "Windows start menu"  then select [Device Manager].



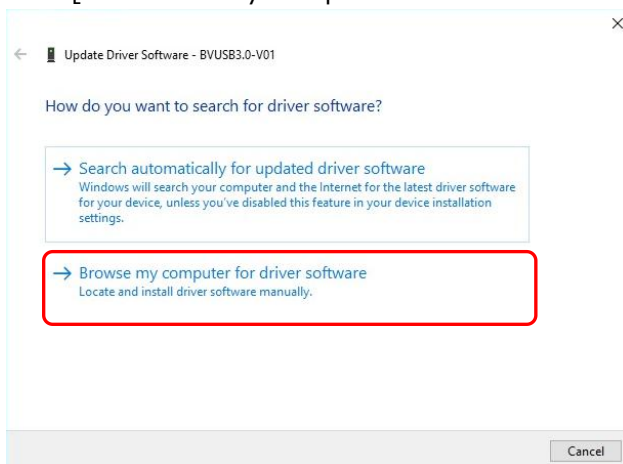
(5) [Device Manager] window opens and [Other devices]-[MC05-WAVE-Ver1.0] is shown as below.



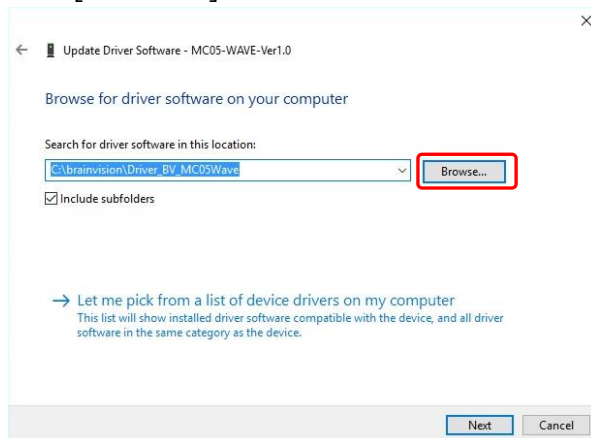
(6) Right-click "MC05-WAVE-Ver1.0" and then, select [Update Driver Software...] from the pop-up menu.



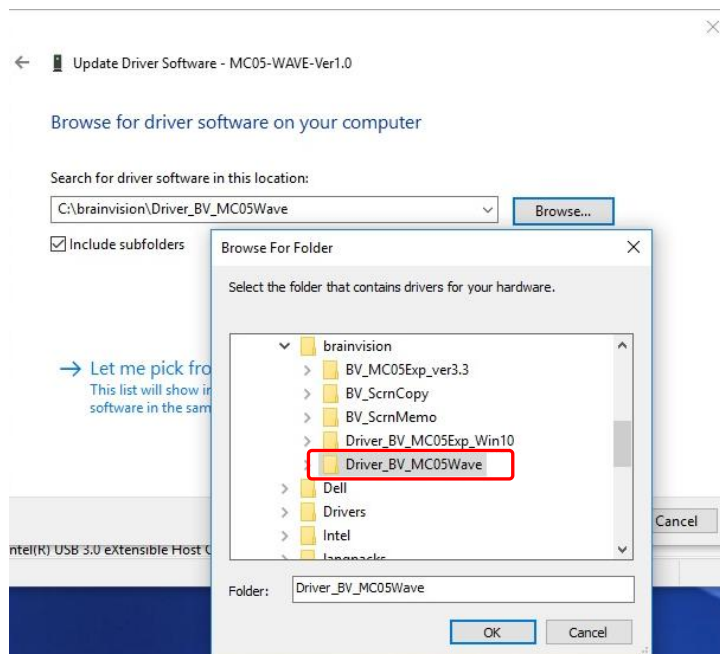
(7) Click [->Browse my computer for driver software].



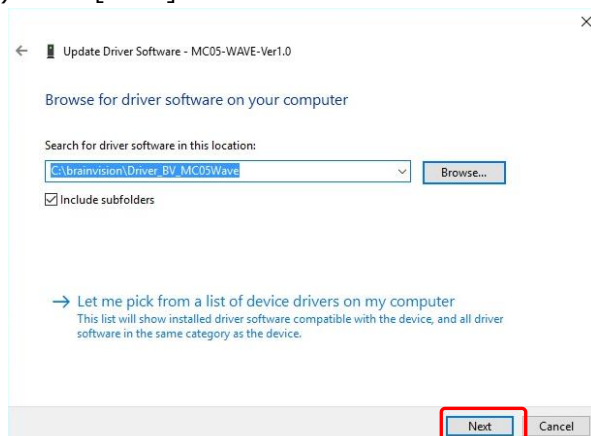
(8) Click [Browse...] button.



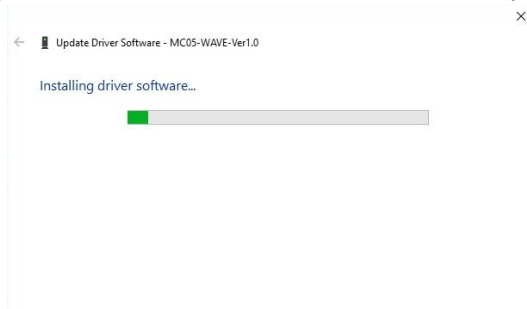
(9) Select "Driver_BV_MC05Wave" folder, which was extracted in (0-1), and then click [OK] button.



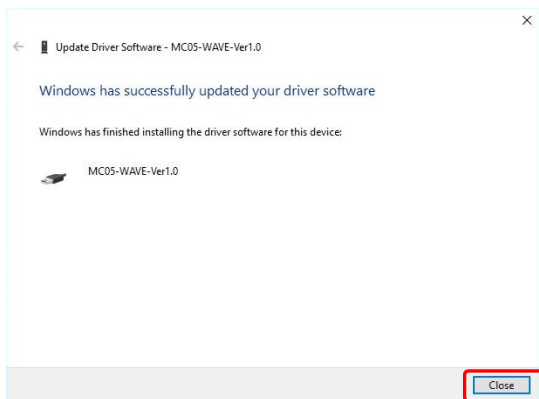
(10) Click [Next] button.



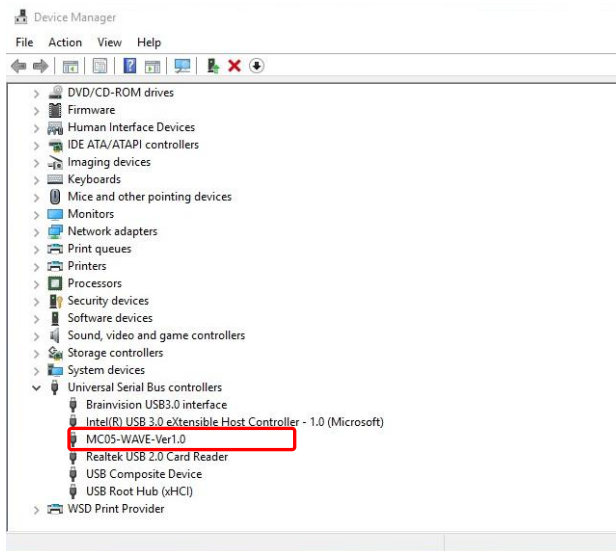
(11) The driver installation starts. This may take about one minute for the first time.



(12) After the installation is completed, "Windows has successfully updated your driver software" will appear as shown below. Click [Close] button.



(13) If the installation is completed successfully, [MC05-WAVE-Ver1.0] will appear under [Universal Serial Bus Controller] on [Device Manager] window.



(14) Start wave function software  by double-clicking an icon shown on the desktop of Windows (or registered with start menu).